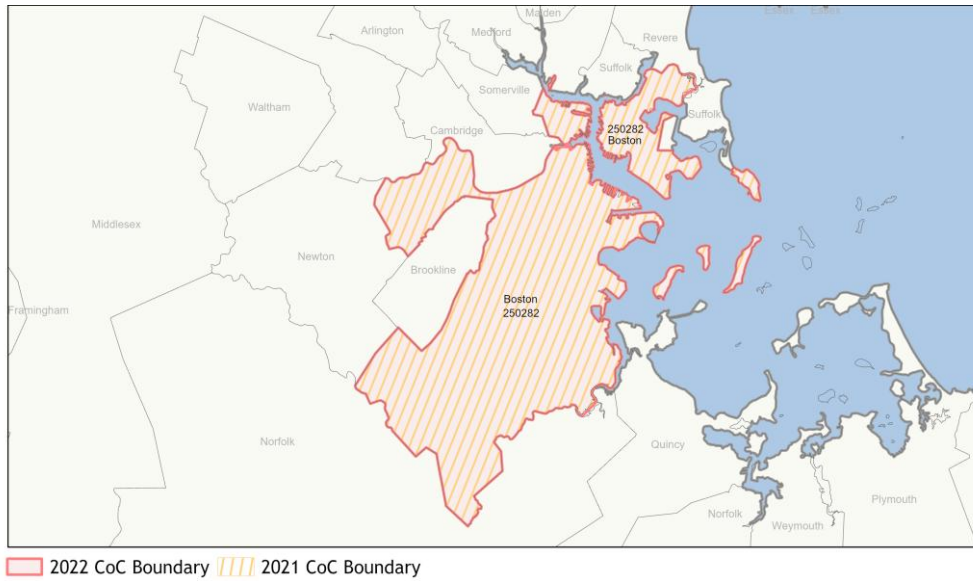
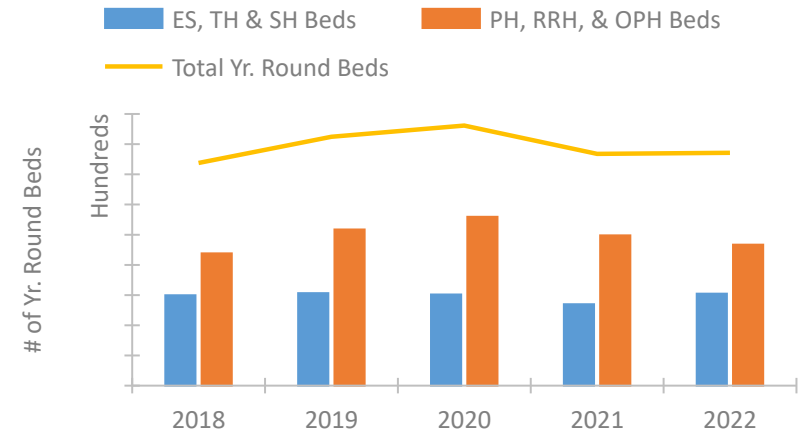


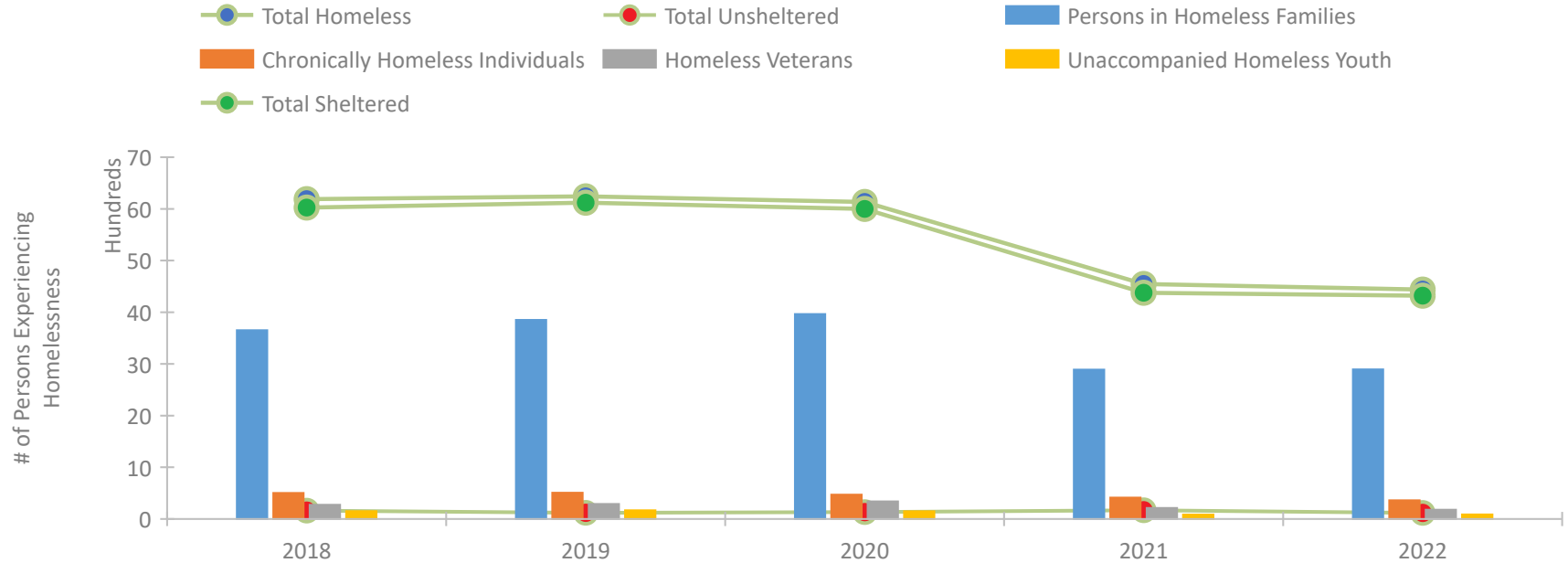
## CoC Performance Profile MA-500 Boston CoC



### Housing Inventory Count by Program Type



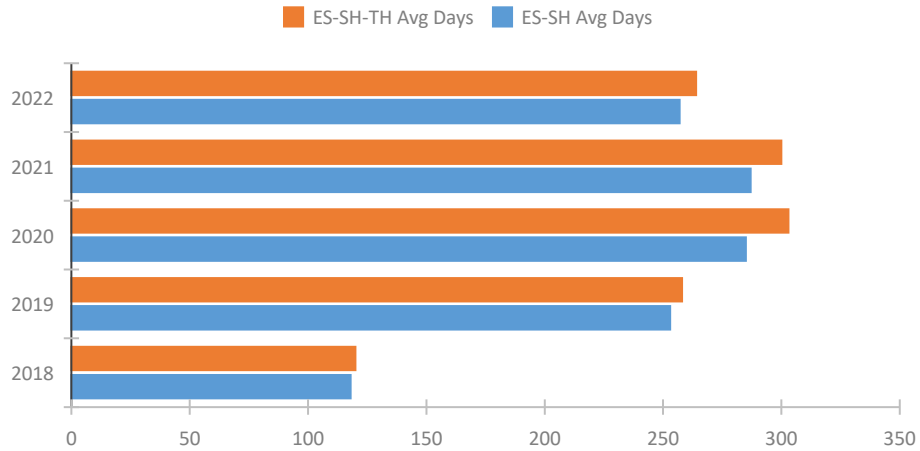
### Homeless Population – Point-in-Time (PIT) Count\*



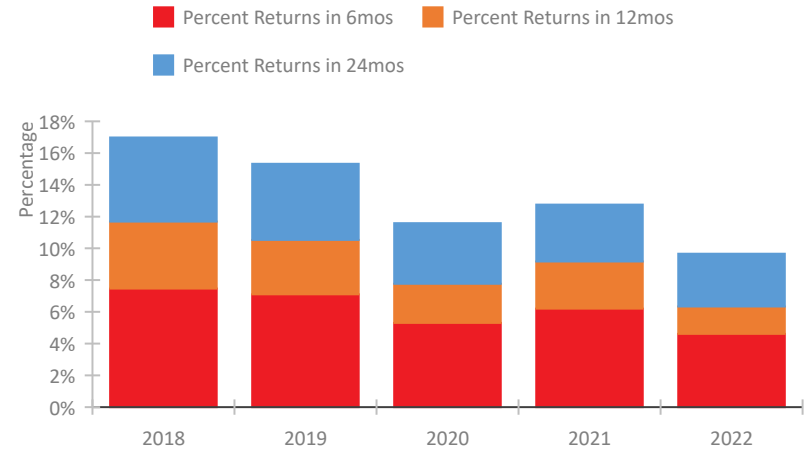
\*In 2021, HUD gave communities the option to cancel or modify the unsheltered survey portion of their counts based on the potential risk of COVID-19 transmission associated with conducting an in-person survey. As a result, HUD has excluded the unsheltered population sub-totals and all unsheltered sub-population data for this reporting period. The user is cautioned that the unsheltered and total homeless counts reported here may be missing data.

## CoC Performance Profile MA-500 Boston CoC

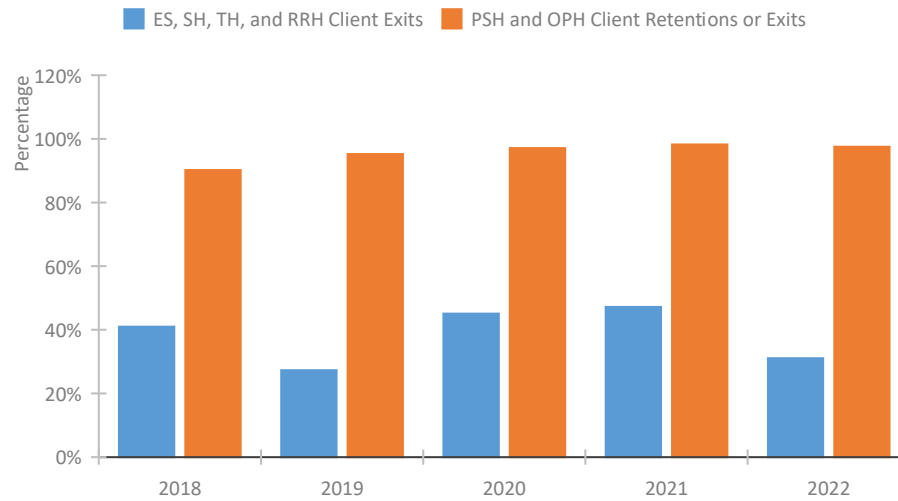
### Length of Time Homeless



### Returns to Homelessness Over Time



### Exits to Permanent Housing by Program Type



## Data Summary: MA-500 Boston CoC

### Point-In-Time Count Summary\*

	2018	2019	2020	2021	2022	2021-22 Change	% Change
Number of Sheltered Persons in Families	3,653	3,850	3,965	2,889	2,894	5	0%
Number of Unsheltered Persons in Families	0	0	0	--	0	--	--
Number of Sheltered Individuals	2,372	2,271	2,034	1,489	1,426	-63	-4%
Number of Unsheltered Individuals	163	121	135	--	119	--	--
<b>Total Homeless Persons</b>	<b>6,188</b>	<b>6,242</b>	<b>6,134</b>	<b>4,378</b>	<b>4,439</b>	<b>61</b>	<b>1%</b>
Number of Sheltered Families	1,121	1,221	1,294	879	955	76	9%
Number of Unsheltered Families	0	0	0	--	0	--	--
<b>Number of Total Families</b>	<b>1,121</b>	<b>1,221</b>	<b>1,294</b>	<b>879</b>	<b>955</b>	<b>76</b>	<b>9%</b>
Sheltered Chronically Homeless Individuals	475	491	450	414	324	-90	-22%
Unsheltered Chronically Homeless Individuals	29	17	21	--	38	--	--
<b>Total Chronically Homeless Individuals</b>	<b>504</b>	<b>508</b>	<b>471</b>	<b>414</b>	<b>362</b>	<b>-52</b>	<b>-13%</b>
Sheltered Veterans	268	286	338	213	174	-39	-18%
Unsheltered Veterans	7	4	3	--	6	--	--
<b>Total Veterans</b>	<b>275</b>	<b>290</b>	<b>341</b>	<b>213</b>	<b>180</b>	<b>-33</b>	<b>-15%</b>
Sheltered Unaccompanied Youth (up to 24)	143	162	143	84	86	2	2%
Unsheltered Unaccompanied Youth (up to 24)	8	6	6	--	1	--	--
<b>Total Unaccompanied Youth (up to 24)</b>	<b>151</b>	<b>168</b>	<b>149</b>	<b>84</b>	<b>87</b>	<b>3</b>	<b>4%</b>

### System Performance Measures Summary

	2018	2019	2020	2021	2022	2021-22 Change	% Change
Average Length of Time Homeless (days)	120	258	303	300	264	-36	-12%
Rate People Return to Homelessness in 6 Months	7.5%	7.1%	5.3%	6.2%	4.6%	-1.6%	N/A
Number of People who are Homeless for the First Time	7,576	6,077	5,506	4,600	6,002	1,402	30.5%
Rate People Exit from ES, SH, TH, and RRH to PH	41.0%	27.3%	45.1%	47.2%	31.1%	-16.1%	N/A
Rate People in PSH and OPH Retain or Exit to PH	90.2%	95.2%	97.1%	98.2%	97.5%	-0.7%	N/A

### Housing Inventory Count Summary

	2018	2019	2020	2021	2022	2021-22 Change	% Change
Emergency Shelter (ES)	5,365	5,578	5,458	4,880	5,304	424	9%
Safe Haven (SH)	60	41	41	60	95	35	58%
Transitional Housing (TH)	563	515	545	455	694	239	53%
Permanent Supportive Housing (PSH)	4,860	5,487	5,496	3,119	3,230	111	4%
Rapid Re-Housing (RRH)	1,182	872	1,598	1,388	1,964	576	41%
Other Permanent Housing (OPH)	2,722	3,994	4,093	5,457	4,143	-1,314	-24%

### Award Summary

	2018	2019	2020	2021	2022	2021-22 Change	% Change
<b>Continuum of Care (CoC)</b>	\$29,021,101	\$31,723,357	\$38,685,686	\$38,088,660	\$42,527,646	\$4,438,986	12%
<b>Emergency Solutions Grants (ESG)</b>	\$1,418,872	\$1,461,960	\$1,506,611	\$1,487,124	\$1,486,063	(\$1,061)	0%
<b>Youth Homelessness Demonstration Program (YHDP)</b>	--	--	--	--	--	--	--

\*In 2021, HUD gave communities the option to cancel or modify the unsheltered survey portion of their counts based on the potential risk of COVID-19 transmission associated with conducting an in-person survey. As a result, HUD has excluded the unsheltered population sub-totals and all unsheltered sub-population data for this reporting period. The user is cautioned that the unsheltered and total homeless counts reported here may be missing data.