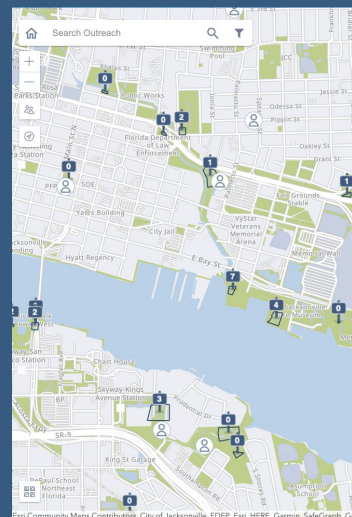




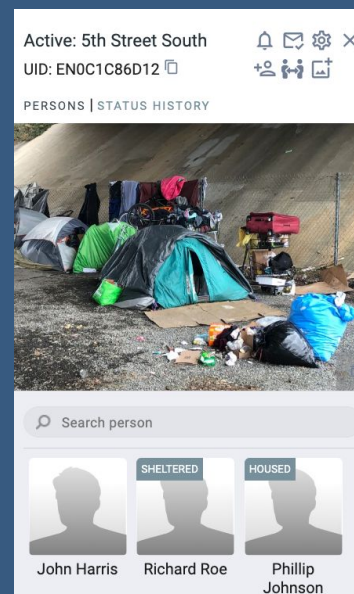
Clarity Human Services: OUTREACH

Outreach is a **fully integrated map-based module**, empowering communities to capture and reflect **individual and encampment location data** directly within HMIS.

- Map unsheltered persons and encampments in your community
- Review most recent location and location history through the client's Location Tab
- Develop encampment assessment tool to evaluate needs and identify gaps
- Use Clarity Data Analysis tools to identify trends and prioritize encampments for services
- Assign teams to encampments to enhance coordination and performance monitoring
- Create map layers to streamline reporting to stakeholders
- Issue notes & alerts to increase communication among teams
- Subscribe to encampments to receive updates on new developments
- Optimized for mobile access



Map encampments as areas or location points



Add images and information to the encampment profile



Check out our Outreach Toolkit!

Assessment & Prioritization

Our Encampment Screen is equipped with **advanced logic** to enable **complex assessments** and **phased data collection** workflows.

Use Clarity Data Analysis tools to **score** your encampment assessment and **prioritize** encampments for service delivery, mitigation resources, or resolution initiatives.

Encampment Resolution

Implement enrollment based workflows to:

- Map encampments upon initial notification
- Assign teams
- Issue assessments, and
- Manage encampment resolution efforts

Create encampment rosters to monitor progress and assess performance using compatible Clarity Data Analysis tools.